

Global Wireless Summit & Wireless Personal Multimedia Communications 2019

Ivo Sousa

Fernando Velez

Pedro Sebastião

António Rodrigues

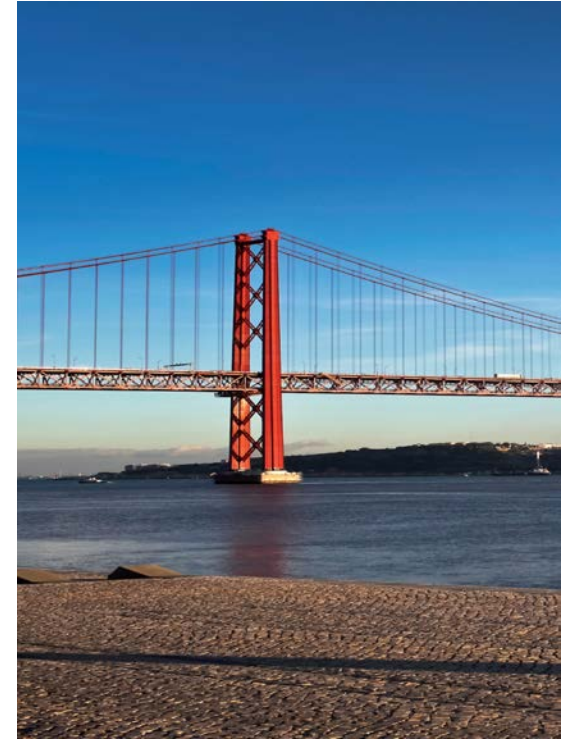
Instituições Associadas



Organized by:
Instituto de Telecomunicações
Venue:
ISCTE-IUL Conference Centre

GWS/WPMC 2019

Lisbon, Portugal, 24th-27th Nov. 2019



Proposed conference event

The 7th Global Wireless Summit (GWS - 2019) and the 22nd International Symposium on Wireless Personal Multimedia Communications (WPMC - 2019) will be jointly held in Lisbon, Portugal

- Instituto de Telecomunicações, ISCTE-IUL
 - Located at the heart of Lisbon
 - ICT 2014 and ISWCS 2018 hosted at same venue
 - Easy access to all forms of transportation
 - Close proximity to Parque das Nações, the 1998 Lisbon World Exposition venue
- 24-27 November 2019
 - Mean temperature: 11°-19°C
 - Fall season

Key emphasis of this year's conferences

A key emphasis of this year's conferences is *borderless smart society - bridging across industries, public and private companies, universities, research labs, and other knowledge societies in exploration of the newest wireless technologies pursuing new ways of living and travelling as well as innovative and sustainable solutions for the future*

GWS 2019

- GWS looks to help businesses in strengthening their business models, business model innovation and technology with the aim to create, capture, deliver, receive and consume new techno-business model ecosystems through cross-/inter-disciplinary research and collaboration and including startups and spinoffs from science
- Some of the important interest areas are
 - IoT and body communications
 - cellular for the skies
 - spectrum management
 - public policy issues
 - Multi-Business Model Innovation and Technology (MBIT)

WPMC 2019

- The WPMC symposia series were inaugurated in 1998, as a global platform which aims at enabling collaboration in the field of wireless information
- Held in Asia, Europe and America, WPMC has established itself as a unique global conference dedicated to wireless multimedia convergence
- Continuing the series, the 22nd WPMC will bring together academia, industry, standardization bodies and *startups* to explore activities, trends and future challenges towards
 - ICT globalization for health
 - vehicular and resource optimization issues in existing and future wireless technologies

A challenging technical programme



A challenging technical programme



Technical Programme – GWS 2019

1. Multi business model innovation in a world of human bond and vehicular communication
2. Persuasive Business Models for Next Generation Communications and Future Networks
3. Imperative Business Models for Green Technology for Society: Intelligent Systems, Sustainable Energy, eHealth, and Big Data in Cloud Environments
4. Business Models for Non conventional Approaches in Health, Smart Regions and Social Science
5. Standards for communications and networking
6. Knowledge Home
7. Technology Transfer in ICT

Technical Programme – WPMC 2019

1. Spectrum management, cognitive radio and game theory for 5G communications
2. Network functions virtualization and software defined networking
3. Control, monitoring and cooperative communication issues in vehicular environments, Information theory, channel, joint source channel and network coding
4. Signal processing for communications, multi-antenna and beamforming systems
5. Satellite and navigation systems
6. Optical radio convergence and VLC
7. Cryptography, security, jamming, interference techniques.
8. Image processing, video compression, coding, multimedia and virtual reality

Important Dates

Deadline for Special Session Proposal: June 1, 2019

Deadline for Tutorials Proposal: June 1, 2019

Deadline for Papers' Submissions: June 1, 2019

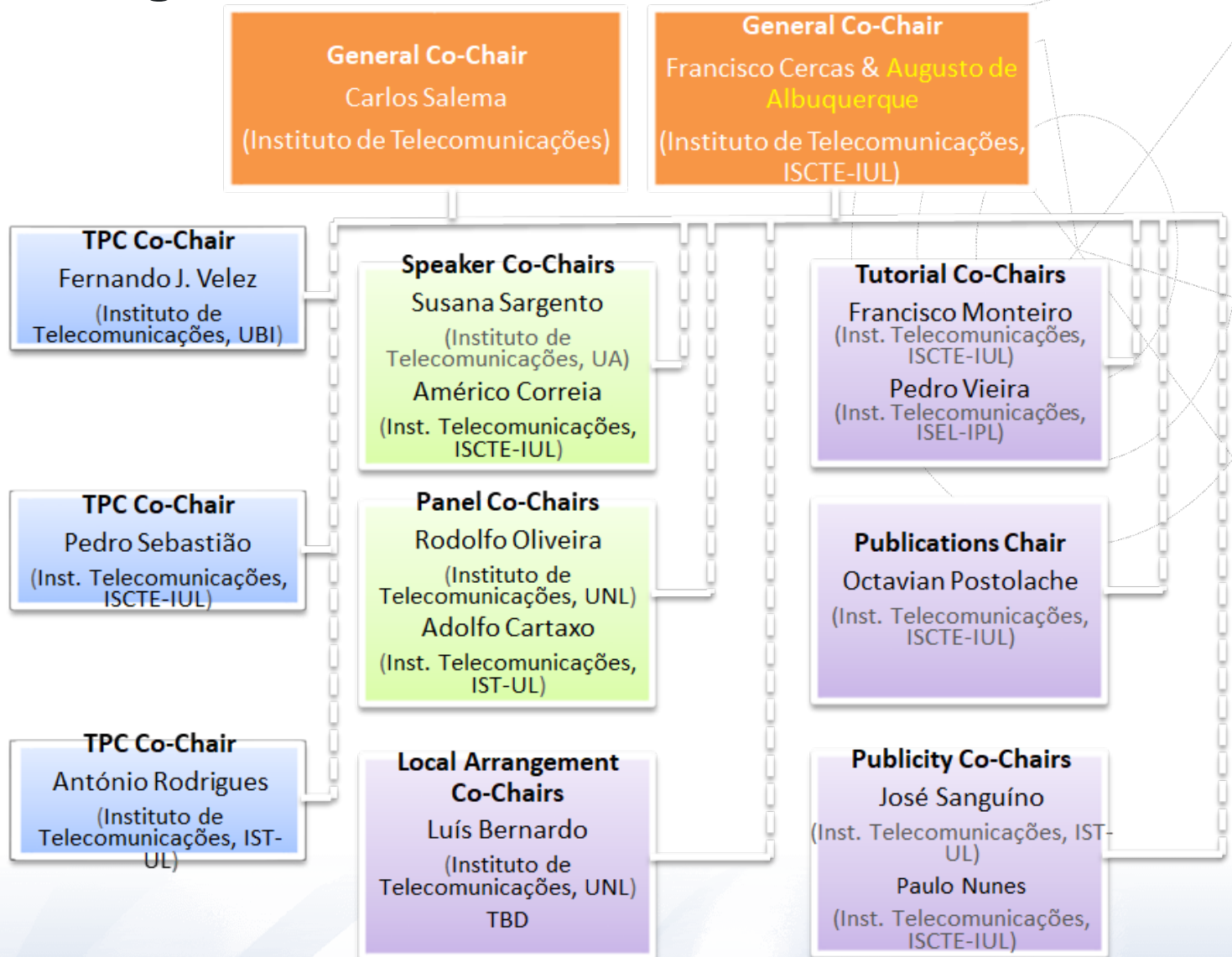
Notification of Acceptance: July 10, 2019

Deadline for Final Manuscript Submission: July 26, 2019

Deadline for Early Registration: September 6, 2019

Conference Dates: November 24 – 27, 2019

Proposed Organization Chart



A rich social programme (suggestions)

- The Gala dinner for all (include FADO Portuguese Music)
 - Possible Visit to Sintra (and Cascais) by bus (alternatively to Serra da Arrábida)
 - Overview of Lisbon by boat on Tagus river (Parque das Nações EXPO98-Belém-Parque das Nações EXPO98-New and Old town)
-
- [Visit Lisboa website](#)
 - [Lisbon City Hall website](#)
 - [Virtual Portugal website](#)

Welcome to Lisbon



Welcome to Lisbon

<https://www.youtube.com/watch?v=QtLnX6jLcHk> - <https://www.youtube.com/watch?v=QtLnX6jLcHk>

<https://www.youtube.com/watch?v=6Jqdti9qM9w>

<https://www.publico.pt/2018/06/13/p3/video/conhecer-lisboa-em-1045-fotografias-2018618234546>

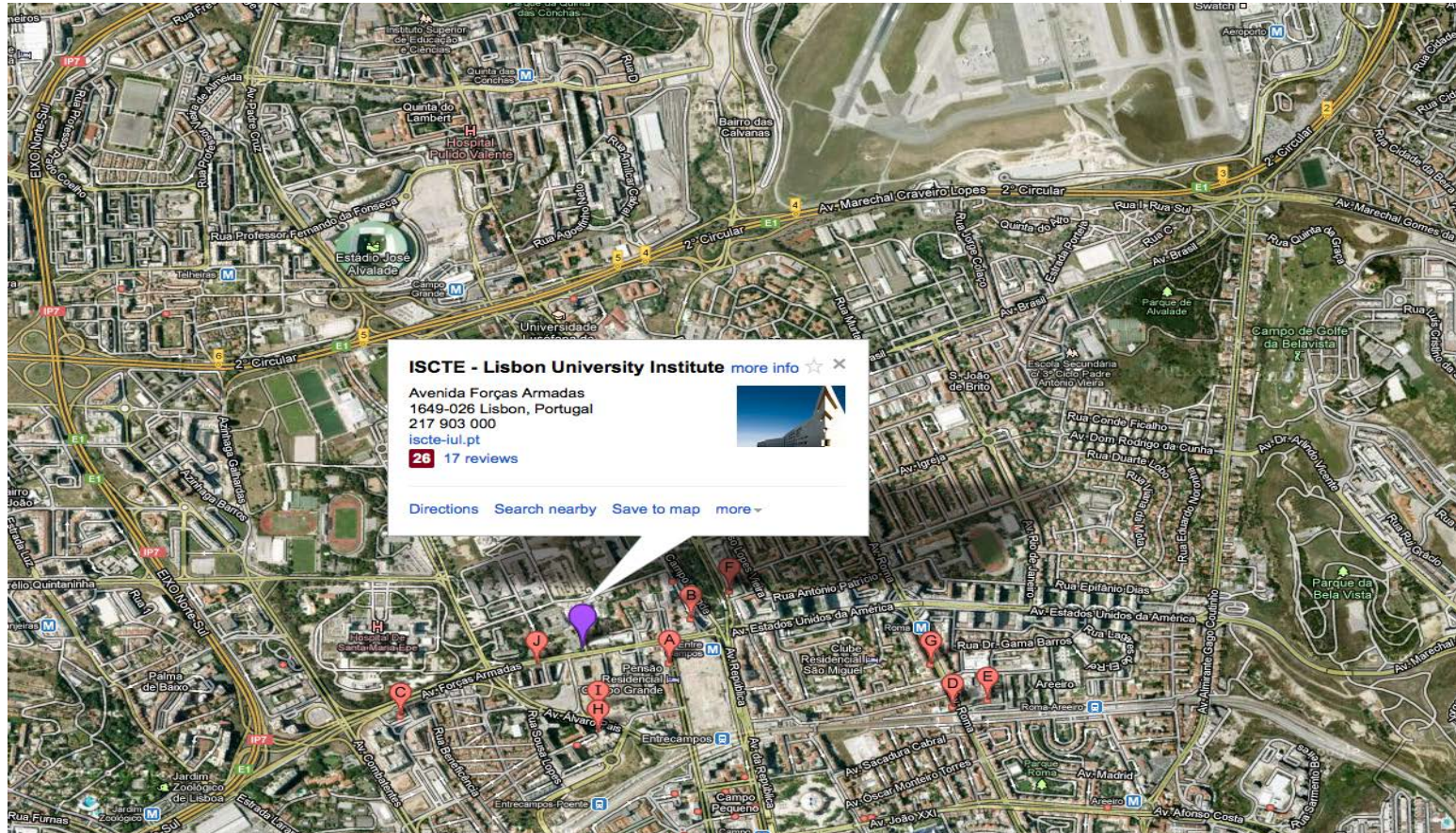
<https://www.youtube.com/watch?v=pLJfkZWrhRE>



Welcome to Lisbon

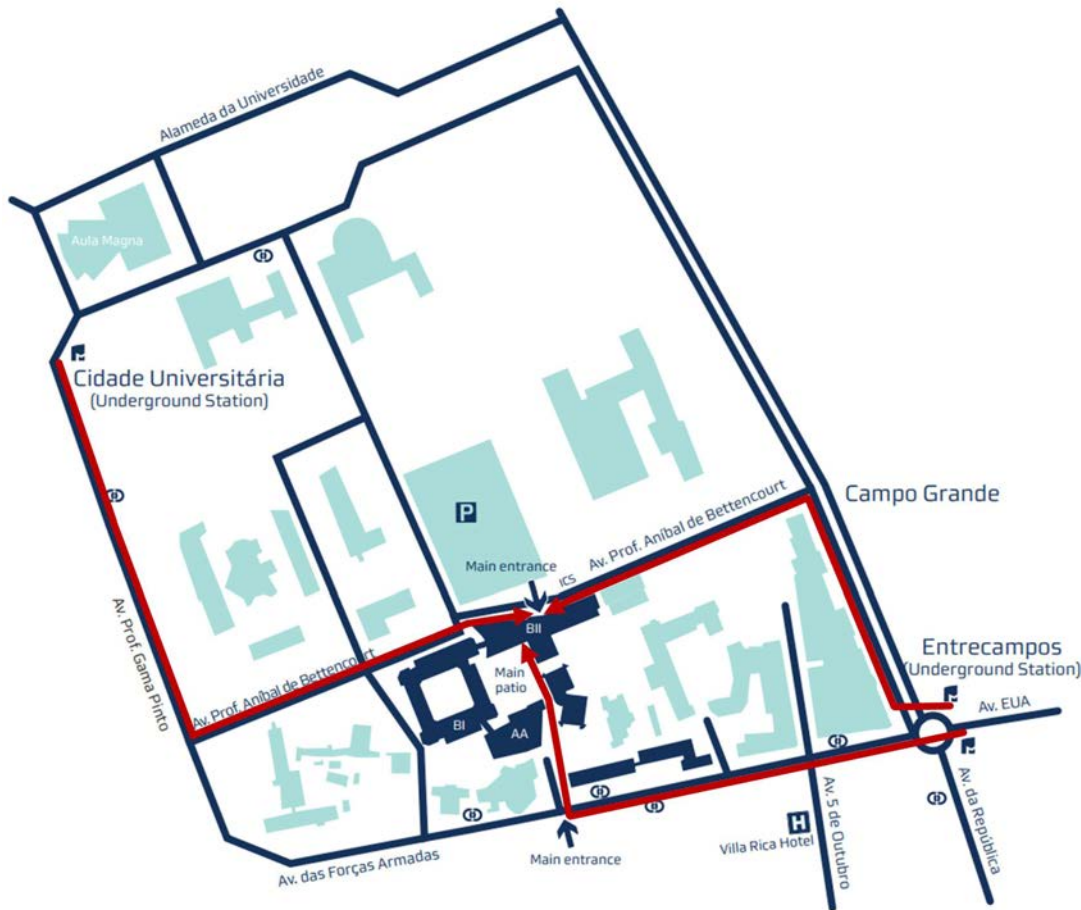


Location: map (route from airport to campo Grande, ISCTE-IUL)



Address ISCTE - Instituto Universitário de Lisboa Av.^a das
Forças Armadas, 1649-026 Lisboa Portugal
Coordinates Latitude: 38.748753; Longitude: -9.153692

Venue - Instituto Universitário de Lisboa, Avenida das Forças Armadas, 1649-026 Lisboa, Portugal - Building II



- AA - Building AA / Ala Autónoma
- BI - Sedas Nunes Building / Edifício Sedas Nunes
- BII - Building II / Edifício II
- ICS - Instituto de Ciências Sociais
- P - Parking
- U - Underground
- B - Bus



Information on air companies to Lisbon

Air companies - Lisbon Airport (IATA Code: LIS, ICAO Code: LPPT) is just seven km away from the city center and offers easy access by underground, bus or taxi.

Within 8 minutes you can easily reach ISCTE or your hotel or destination.

Travel

Flights

The primary airport serving the city of Lisbon, Portugal, is Lisbon Airport. The airport is serviced by a variety of airlines, operating different intercontinental flights. Visitors can easily search for cheap flights to Lisbon using booking websites or traveling agencies.

Information on Lisbon metro

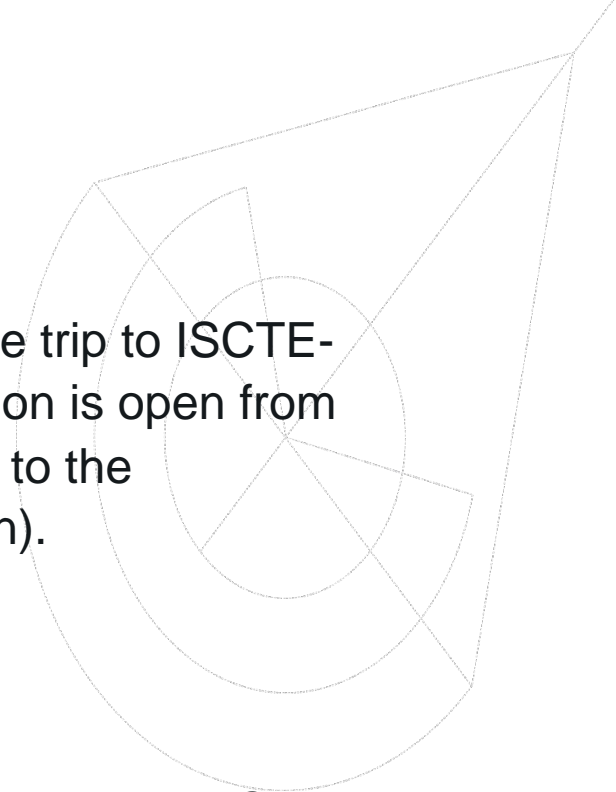
Travel

Metro/Underground

The airport is located 7 km from the city centre and the trip to ISCTE-IUL takes about 30 minutes. The Airport Metro Station is open from 06.30 to 01.00 daily. This train runs from the airport to the conference location (i.e. Entrecampos Metro Station).

You can find the map of Metro network here.

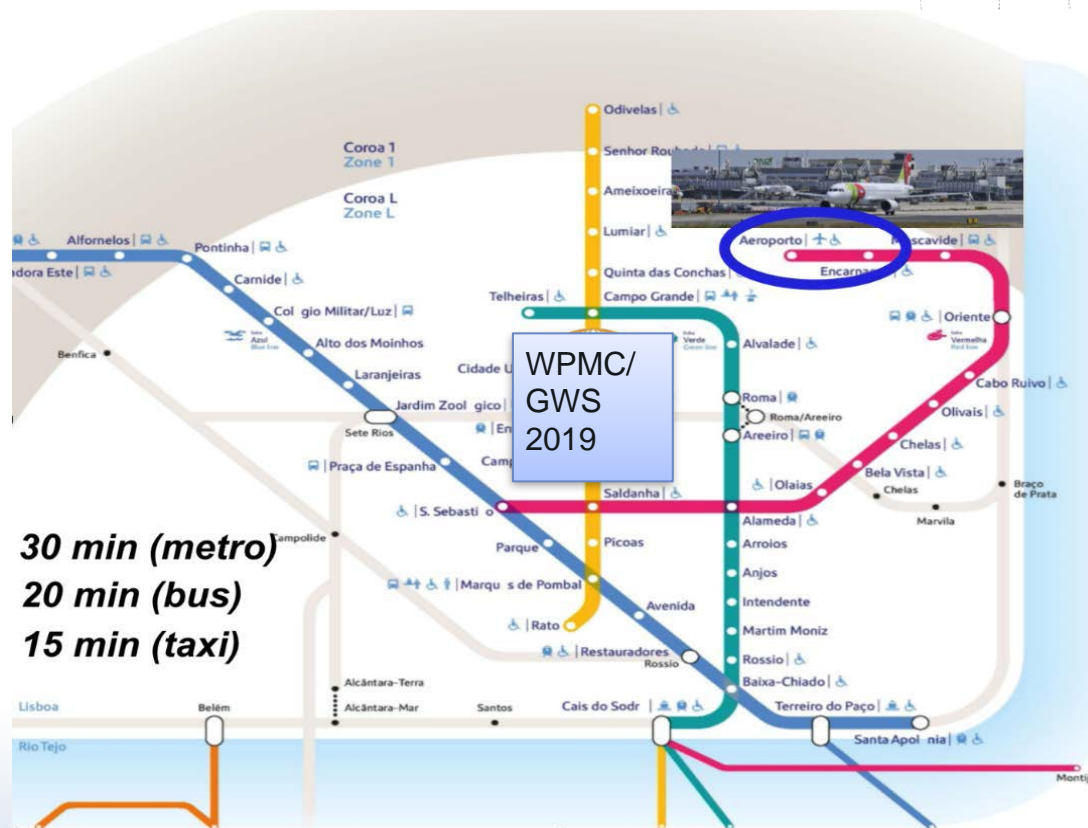
- One-way Carris/Metro ticket: €1.45
- 24-hour ticket: €6.15
- Required rechargeable 7 Colinas/Viva Viagem electronic card: €0.50
- Zapping: charge the 7 Colinas / Viva Viagem with a certain amount of cash and then each time you use train, metro or bus the appropriate amount is deducted (€1.30/ one-way metro or bus trips).



Information on Lisbon metro

Travel

More information available at: <https://www.metrolisboa.pt>.



Information on Lisbon bus

BUS

Bus N° 744: Marquês Pombal – Aeroporto – Moscavide (operates daily from 06.15 to 21.30) Bus N° 783: Portela - Aeroporto - Amoreiras (operates daily from 06.15 to 21.30)

One-way ticket (purchased on the bus): €1.85 One-way Carris/
Metro ticket: €1.45 24-hour ticket: €6.15 Required rechargeable 7
Colinas/Viva Viagem electronic card: €0.50

Important! The above-mentioned regular services operate with the following measurement limits for baggage: 55x40x20cm. For those with baggage exceeding these measurements, we suggest that you use the Aerobus service described below.

More information available at: <http://www.carris.pt>



Information on Lisbon Aerobus

AEROBUS

This daily service links the main points of the city, the Entrecampos Bus Terminal and others major transportation hubs.

Line 2: Financial Centre Direction: Airport* – Av. José Malhoa (Sul) Operates daily from 08.00 to 20.00/every 40 minutes Direction: Av. José Malhoa (Sul) – Airport* Operates daily from 08.00 to 20.00/every 40 minutes *Direct connection to Airport Terminals T1 and T2; 24-hour Aerobus Pass Adult: €3.50; Child (4–10 years old): €2.00; Groups (4 or more adults): €2.00 The 24-hour Aerobus Pass can be purchased on-board, on-line or at the Lisbon Tourism counters in the public Airport Arrivals area. This ticket is valid for 24 hours on the Aerobus network (i.e. unlimited trips). 2x24-hour Aerobus Pass Adult: €5.50; Child (4–10 years old): €3.00 The 2 x 24-hour Aerobus Pass can be purchased on-board, on-line or at the Lisbon Tourism counters in the public Airport Arrivals area. Each time the pass is activated, it is valid for 24 hours on the Aerobus network (i.e. unlimited trips).

More information available at: <http://www.yellowbustours.com>



Information on Lisbon taxi | Uber/Taxify/...

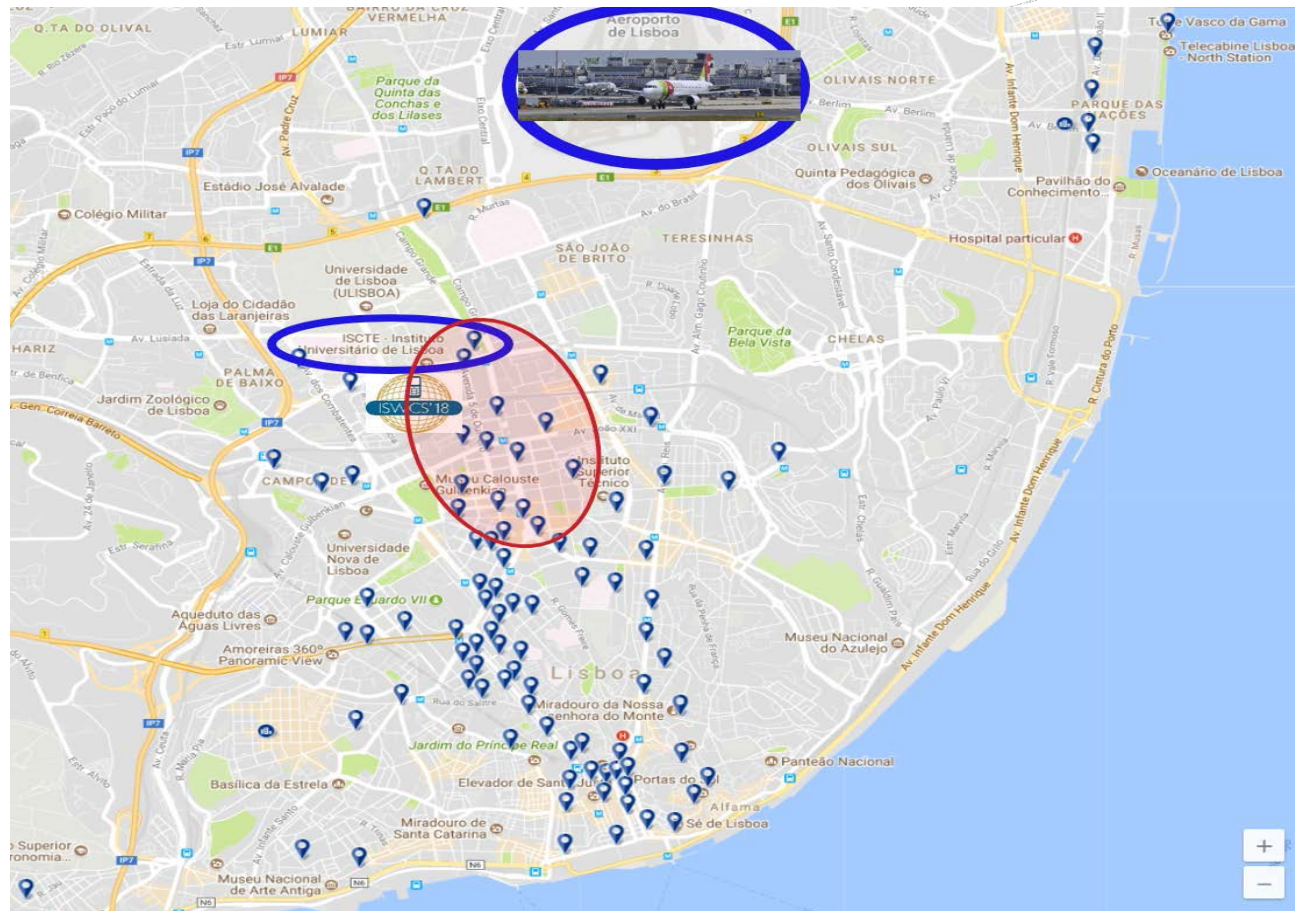
Taxi

Passengers who are concerned about the fare they will be charged can purchase a taxi voucher from the Lisbon Airport information desk, for about €16.00 (€20.00 for Night Time, Weekends and Holidays). The voucher will allow for travel to any area within the city center, with luggage.

Alternatives:

Uber / Taxify / MyTaxi / ChauffeurPrivé

Accommodation & nearby Hotels



Accommodation & nearby Hotels

Accommodation

The ISCTE-IUL campus is located in a central area of the city with plenty of easy reach accommodation options. A range of hotels are available at discount rates, some near the venue and some close to the historic city centre:

List of hotels at discount rates considering in the last conference IWSCS 2018 (please follow the link)

Visa Information

Visa Information

Portugal as is a European Union (EU) member state and also a member of the Schengen Area. Travellers coming from within the Schengen Area do not go through border control in normal circumstances. Citizens coming from any of the the four EU Member states not in the Schengen area (Ireland, UK, Cyprus and Croatia) need only an identity card to enter Portugal. In addition to their identity card, minors must also present authorisation from their parents to travel.

In addition to all EU countries, Visas are not required by visitors from the following countries for visit up to 90 days in a 6 month period:

Albania, Andorra, Antigua and Barbuda, Argentina, Australia, Austria, Bahamas, Barbados, Bosnia and Herzegovina, Brazil, Brunei, Canada, Chile, Colombia, Costa Rica, Dominica, El Salvador, Georgia, Grenada, Guatemala, Holy See, Honduras, Hong Kong, Israel, Japan, Kiribati, Macao, Macedonia, Malaysia, Marshall Islands, Mauritius, Mexico, Micronesia, Moldova, Monaco, Montenegro, New Zealand, Nicaragua, Palau, Panama, Paraguay, Peru, Saint Kitts and Nevis, Saint Lucia, Saint Vincent and the Grenadines, Samoa, San Marino, Serbia, Seychelles, Singapore, South Korea, Switzerland, Taiwan, Timor-Leste (East Timor), Tonga, Trinidad and Tobago, Tuvalu, United Arab Emirates, United States, Uruguay, Vanuatu, Vatican City and Venezuela.

Visitors from the countries not listed above need a Schengen Visa to enter Portugal the countries needing Visa can be found here.

Under the terms of the Convention Implementing the Schengen Agreement, flights between Schengen states are considered to be internal flights and passengers do not need to obtain another Visa.

Related links:

[Visa requests](#)

[Portuguese Immigration and Borders Service](#)

[Portuguese consulates](#)



See you in Lisbon!



instituto de
telecomunicações

ISCTE  IUL

Instituto Universitário de Lisboa