

WIRELESS PERSONAL MULTIMEDIA COMMUNICATIONS (WPMC 2022)

Ramjee Prasad,
WPMC Steering Committee Co-Chair
Founder President of CTIF Global Capsule (CGC)
Professor, Future Technologies for Business Ecosystem Innovation (FT4BI),
Aarhus University, BTECH, CGC, Herning, Denmark

October 30-Nov 2 2022
Herning, Denmark

WPMC 2022

AARHUS UNIVERSITY - HERNING, DENMARK



WPMC 2022

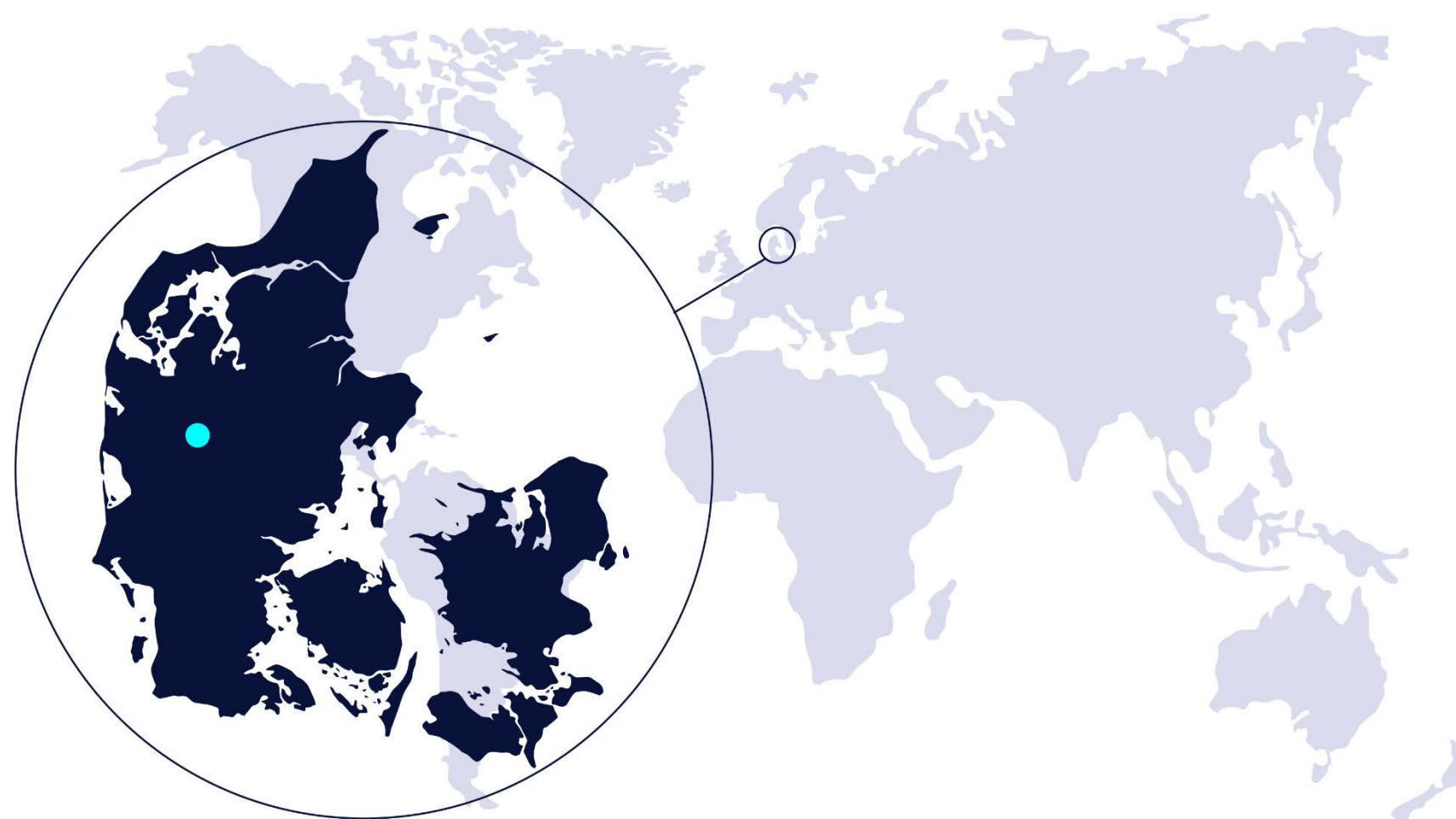
SILVER JUBILEE ANNIVERSARY

FROM JAPAN THROUGH THE GLOBE TO DENMARK

THE 25TH INTERNATIONAL SYMPOSIUM
ON WIRELESS PERSONAL MULTIMEDIA
COMMUNICATIONS

DEVICE-TO-DEVICE SECURE
COMMUNICATION

30 OCT – 02 NOV 2022,
AARHUS UNIVERSITY
HERNING, DENMARK



WPMC 2022

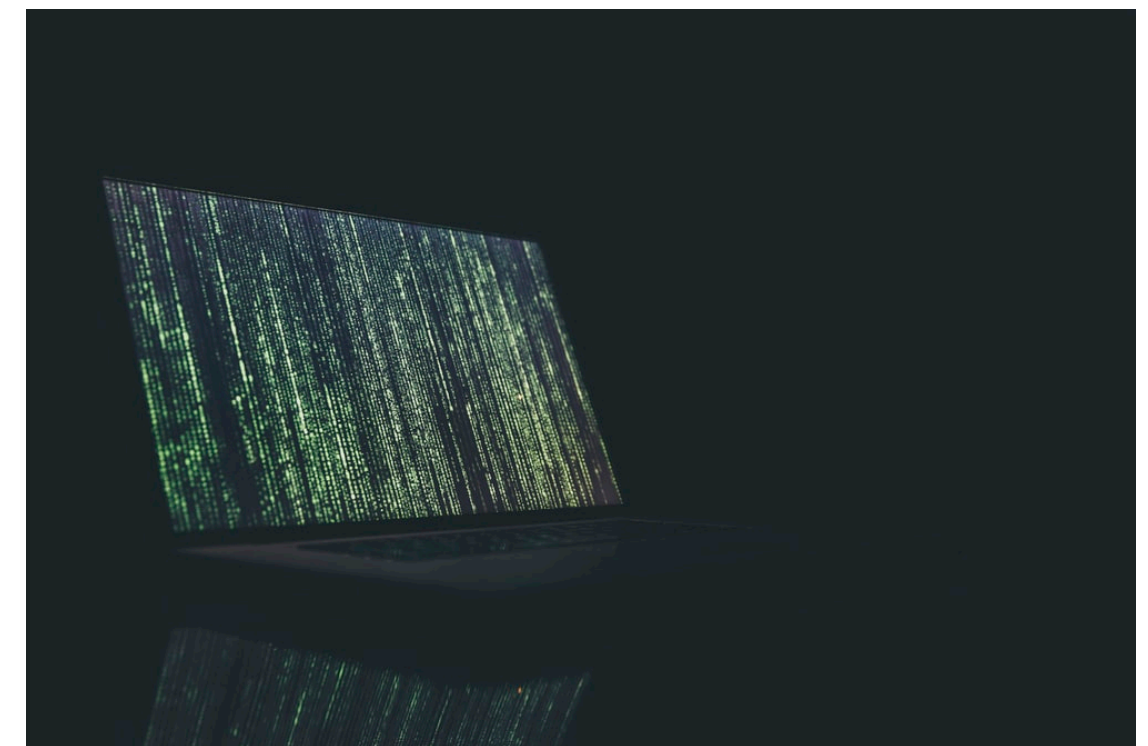
The 25th International Symposium on Wireless Personal Multimedia Communications (WPMC – 2022) celebrates the silver jubilee of the WPMC symposia series that was inaugurated in 1998 in Japan, as a global platform to enable collaboration in the field of wireless information.

The 25th WPMC will be held in Herning, Denmark, hosted by Department of Business Development and Technology, Aarhus University Herning

WPMC 2022

DEVICE-TO-DEVICE SECURE COMMUNICATION

WPMC has established itself as a unique global conference dedicated to wireless multimedia convergence. The theme of the WPMC 2022 conference will, therefore, be **Device-to-Device Secure Communication** – bridging across industries, public and private companies, universities, research labs, and other knowledge societies in exploration of the newest digital device technologies and pursuing innovative ways of living, conducting business, travelling, and so forth, towards sustainable and secure solutions for the future.



THE WPMC 2022, TAKE PLACE IN HERNING, DENMARK

Addresses:

- 1) The University BTECH Institute:
Birk Centerpark 15, 7400
Herning, Denmark
- 2) The MCH Herning
Kongrescenter: Østergade 37,
Herning, Denmark

Billund Airport

<https://www.bll.dk/en-en>



CONFERENCE VENUES

SUNDAY THE 30 OCTOBER

Tutorials & Welcome Reception
at the University BTECH Institute



MONDAY – WEDNESDAY THE 31.10 - 02.11

Conference at MCH
in the center of Herning



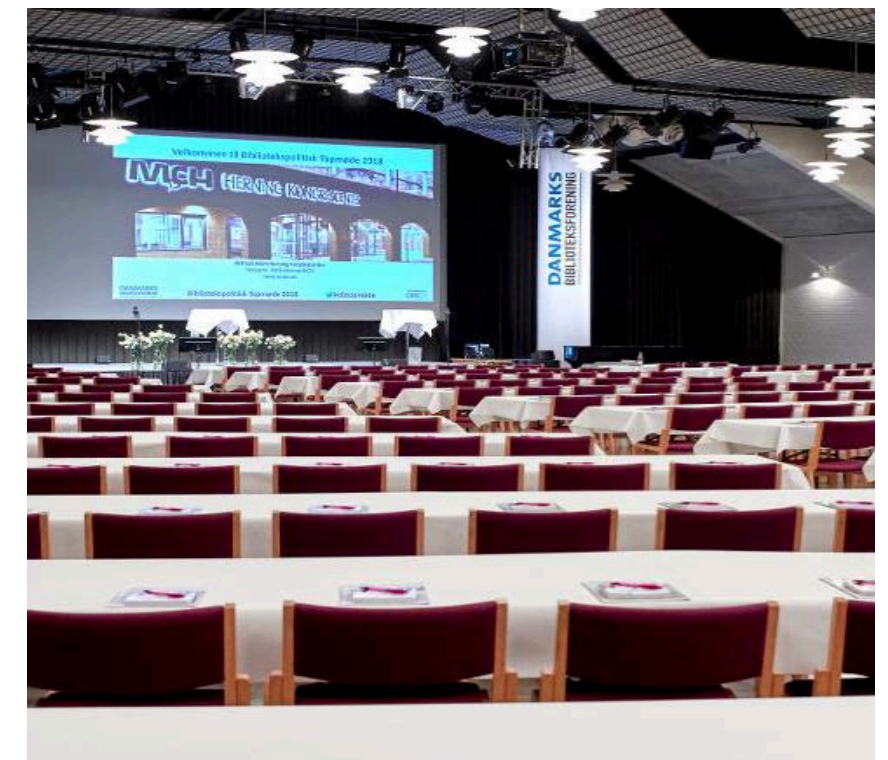
PRELIMINARY PROGRAMME

| Date | Activities | Expected participants | Keynotes & VIP |
|--------------------------|---|---|---|
| Sunday 30.10 Day time | Tutorials at BTECH | 100 (3 Coffee breaks + 1 Lunch) | - |
| Sunday 30.10 Evening | Welcome Reception at BTECH | 300 (light refreshment at BTECH canteen) | <i>Musical feature by Girls Choir</i> |
| Monday 31.10 | Conference At MCH | 400 (3 Coffee breaks + 1 Lunch) | 2 |
| Monday 31.10 Evening | Board Meeting At MCH | 40 invited Dinner at MCH (<i>Teaterkælder</i>) | - |
| Monday 31.10 Evening | <u>Dinner possibility</u> at MCH - Extra registration & paid by participants | 350 (2 courses incl. beverage) | 3 VIP Guests - Invited by Organizing Committee: Conference Fee + Monday dinner |
| Tuesday 01.11 | Conference At MCH | 400 (3 Coffee breaks + 1 Lunch) | 2 |
| Tuesday 01.11 Evening | Gala Dinner | 389 + 25 spouses (3 courses incl. beverage - served at the table) | <i>Folks Dance</i> |
| Wednesday 02.11 | Conference At MCH | 400 (3 Coffee breaks + 1 Lunch) | 2 |

BTECH Institute: Tutorials



MCH: WPMC Conference



CONFERENCE FEE

| 3 days Conference: 400 Participants | |
|--|------------------|
| Tutorials on Sunday: 100 P. & Welcome Reception: 300 P. | Price each: EURO |
| Early Bird - Full Registration - Non-IEEE Member | 635,00 |
| Early Bird - Full Registration - IEEE Member | 550,00 |
| Early Bird - Student Registration - Non-IEEE Member | 525,00 |
| Early Bird - Student Registration - IEEE Member | 450,00 |
| | |
| Late - Full Registration - Non-IEEE Member | 685,00 |
| Late - Full Registration - IEEE Member | 600,00 |
| Late - Student Registration - Non-IEEE Member | 575,00 |
| Late - Student Registration - IEEE Member | 500,00 |
| | |
| Tutorials on Sunday - Non-IEEE Member | 205,00 |
| Tutorials on Sunday - IEEE Member | 175,00 |
| Tutorials on Sunday - Student Registration-Non IEEE Member | 150,00 |
| Tutorials on Sunday - Student Registration -IEEE Member | 125,00 |
| | |
| One day Fee - Non-IEEE Member - No Galla Dinner | 240,00 |
| One day Fee - IEEE Member - No Galla Dinner | 210,00 |
| One day Fee - Student Non-IEEE Member - No Galla Dinner | 200,00 |
| One day Fee - Student IEEE Member - No Galla Dinner | 170,00 |



AARHUS UNIVERSITY
DEPARTMENT OF BUSINESS DEVELOPMENT
AND TECHNOLOGY

